

Putnam County Jail

Greencastle, IN



Odle McGuire Shook
ARCHITECTURE INTERIOR DESIGN
LANDSCAPE ARCHITECTURE ENGINEERING

OMS designed a new one story county correctional facility that consists of 48 cells with a 20-bed dormitory and includes full services facilities for the Putnam County Sheriff's Department . This facility was privately financed as a lease-to-own, turn-key project



Putnam County Jail



Construction
36,520 sqft

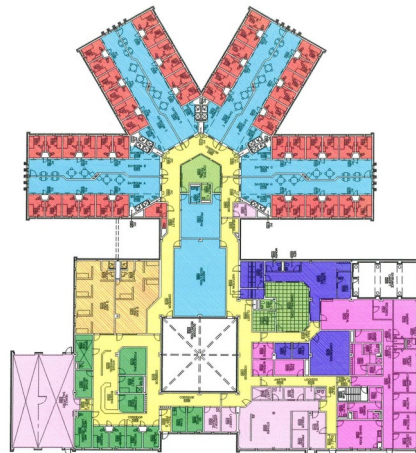
Construction Cost
\$5,572,000

Completion Date
December 1995

Owner
Putnam County Board of
Commissioners

Reference
Donald Walton
Commissioner
317.653.5513

Features
48 Cells
20 Bed Dormitory



OMS is a member of the USGBC
and an Energy Star Partner
with multiple LEED
Accredited Professionals

